



Installing a New Program - AccuStream AS-Series PLC (XLt)

These instructions show you how to properly install a new program on to your AccuStream AS-Series XLt PLC.

Written By: Ryan Engelhardt

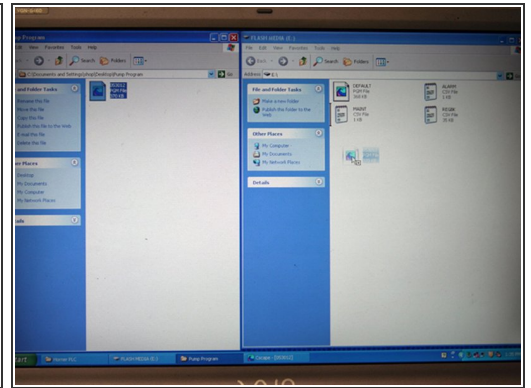
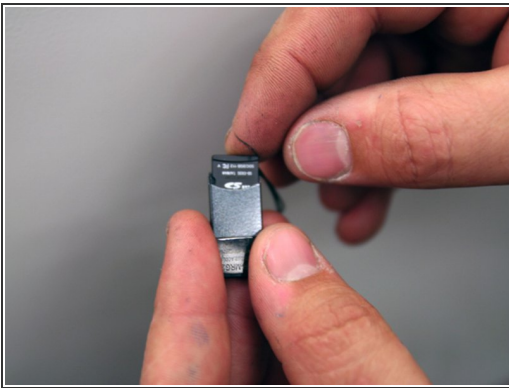


Step 1 — Installing a New Program - AccuStream AS-Series PLC (XLt)



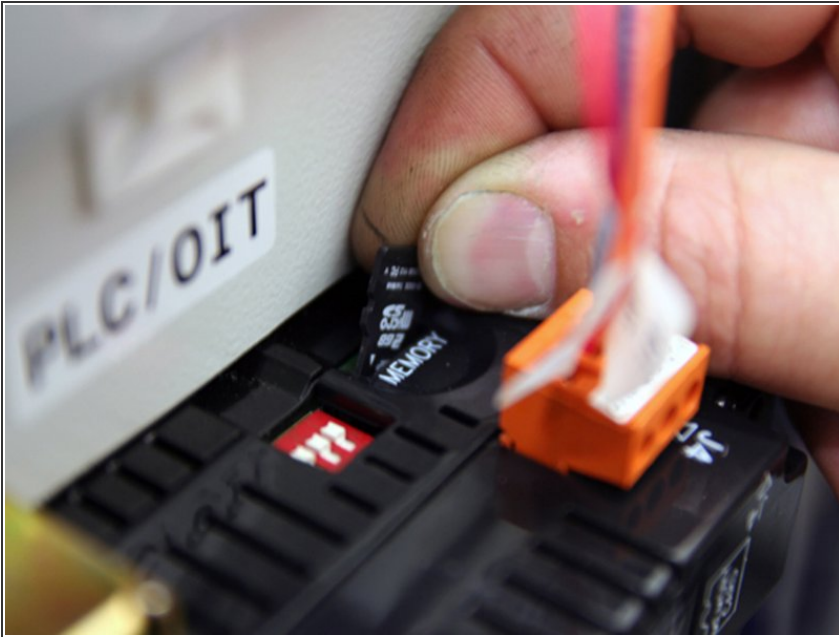
- Remove microSD card from PLC by pushing down on card.

Step 2



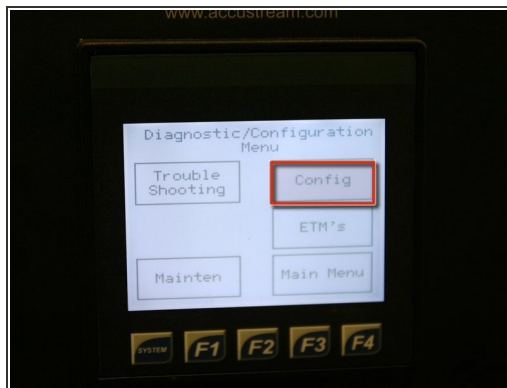
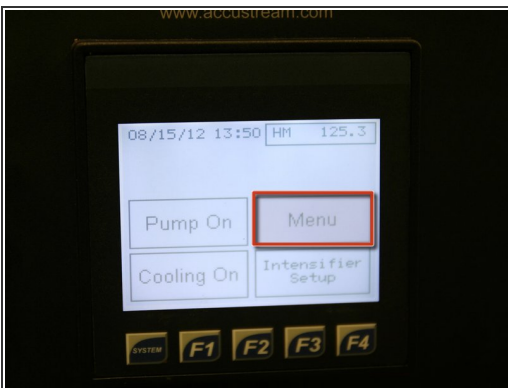
- Insert microSD card into included card reader.
- Insert card reader, with microSD card installed, into computer's USB drive.
- ① Make sure card reader is inserted as shown in picture #2 of this section.
- Copy new program from computer to microSD card.

Step 3



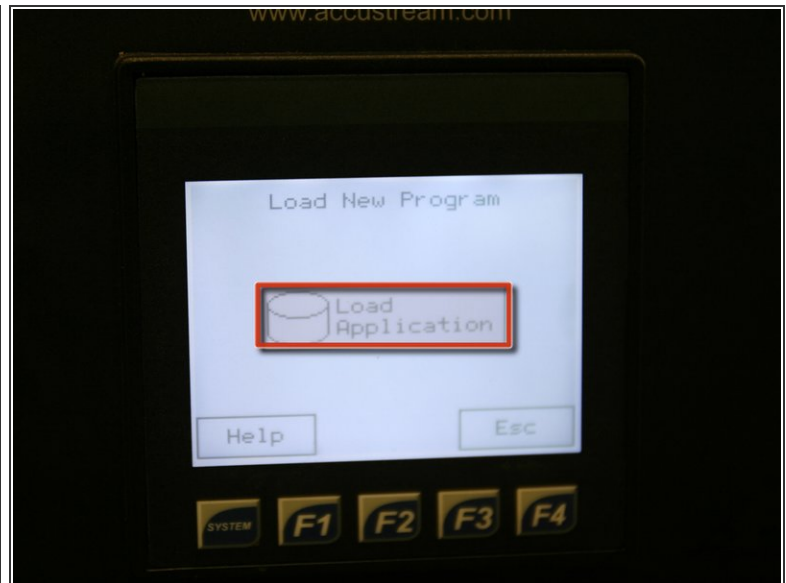
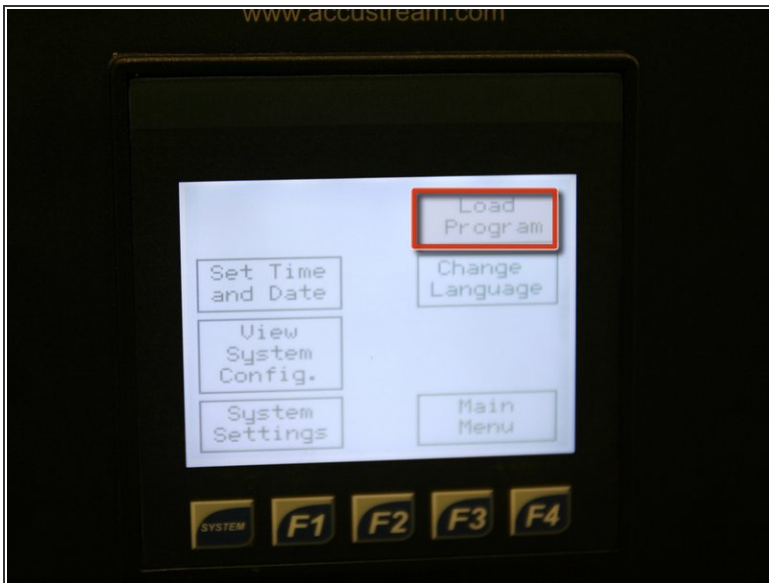
- After program has been copied to microSD card, remove card from computer.
- Insert microSD card into PLC.

Step 4



- Starting at main screen, press Menu.
- Press Config and enter password to enter configuration screen.

Step 5



- On configuration screen, press Load Program.
- Press Load Application on center of screen.

Step 6



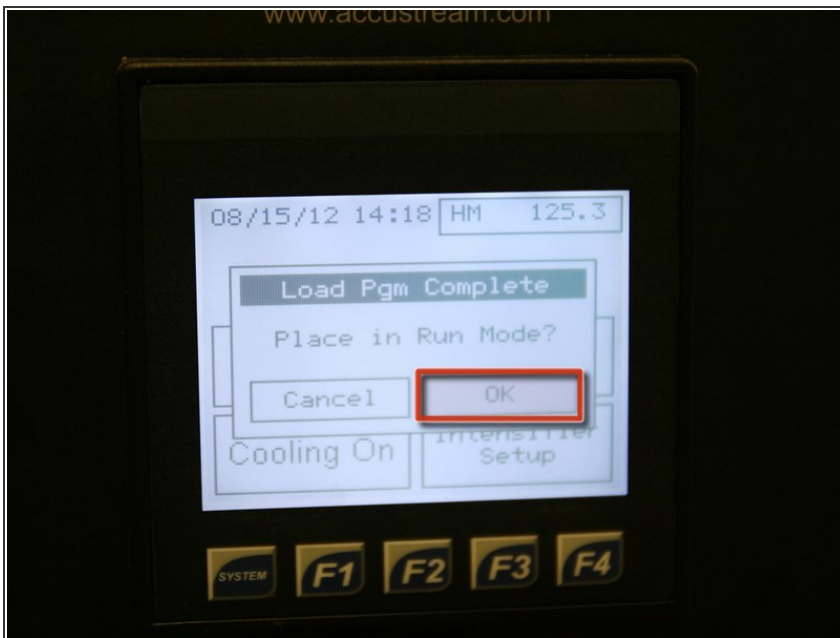
- Press up or down arrow to highlight program to be loaded (.PGM file extension).
- Press enter at bottom right of screen.

Step 7



- Once prompted, press OK to load new program.
- Enter password for new program (AccuStream supplied) and press Enter.

Step 8



- After program has loaded, press OK to place pump in run mode.
- Pump is now ready to operate with new program.